

**SVEN**®

Portable Speaker System  
with Bluetooth and FM-radio

## **USER'S MANUAL**



**PS-250BL**  
**PS-270**

[www.sven.fi](http://www.sven.fi)

***Congratulations on your purchase of the SVEN speaker system!***

**COPYRIGHT**

© 2018. SVEN PTE. LTD. Version 1.0 (V 1.0).

This Manual and information contained in it are copyrighted. All rights reserved.

**BUYER RECOMMENDATIONS**

- Unpack the device carefully. Make sure there are no accessories left in the box. Check up the device for damage; if the product was damaged during transportation, address the firm which carried out the delivery; if the product functions incorrectly, address the dealer at once.
- Shipping and transportation equipment is permitted only in the original container.
- Does not require special conditions for realization.
- Dispose of in accordance with regulations for the disposal of household and computer equipment.

**APPLICATION**

SVEN PS-250BL, PS-270 portable multimedia speaker systems with Bluetooth and FM-radio are designed for operation with PC, notebooks and other mobile devices by means of data transfer via Bluetooth protocol. They can be also used in internet telephony, during video conferences, in multimedia applications, in interactive games, for speech recognition and foreign language teaching. FM-tuner and the player with USB-flash and micro SD-cards are included.

**PACKAGE CONTENTS**

- Speaker system – 1 pc
- 3,5 mm mini-jack to 3,5 mm mini-jack signal cable – 1 pc
- USB to micro USB power cable – 1 pc
- User's Manual – 1 pc
- Warranty card – 1 pc

**SPECIAL FEATURES**

- Bluetooth wireless signal transmission
- Track switching control possibility
- Wired/wireless audio signal transmission
- Built-in player with USB flash and with micro SD memory card
- Built-in FM tuner
- Convenient retractable handle for carrying
- Battery operation time up to 20 hours
- Radius of operation up to 10 m

**SPEAKER SYSTEM DESCRIPTION**

- ① LED indicator: Bluetooth / FM / Player / AUX
- ② : POWER button (long pressing)
- ③ V-: Volume decrease
- ④ V+: Volume increase
- ⑤ M: Switch mode button: Bluetooth / FM / Player / AUX
- ⑥ Microphone
- ⑦ Previous track (in player mode); Previous station (in radio mode)
- ⑧ Play/Pause (in player mode); Automatic scan of radio stations (short pressing in radio mode);
- ⑨ Next track (in player mode); Next station (in radio mode)
- ⑩ Receive / finish an incoming call button
- ⑪ Battery charge indicator
- ⑫ TF: micro SD card slot
- ⑬ Micro USB jack for connecting speakers to the charger, the USB port of laptop / PC
- ⑭ AUX: 3.5 mm mini-jack for audio signal connecting (phone, MP3 player, etc.)
- ⑮ USB: USB flash connector

**CONNECTION AND OPERATION**

**Attention! The built-in battery must be charged completely prior to the application.**

**Speaker system battery charging**

- Connect speaker system to a USB port of PC or USB charger using micro USB to USB cable (included). During battery charging the indicator ⑪ is red.
- The battery is used in the speaker system as an integral part of the device, therefore do not try to extract or replace it, because this can result in the warranty cancellation or the device damage.

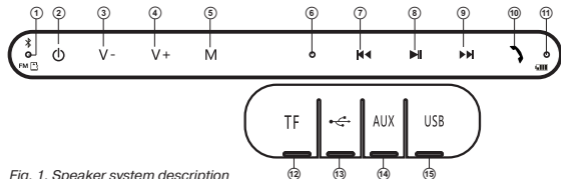


Fig. 1. Speaker system description

## OPERATION MODES

### Bluetooth mode

- Wireless data transfer via the Bluetooth protocol enables to connect speaker system to compatible devices. Maximum radius of action of data transfer is 10 m. Such obstacles as walls or other electronic devices can interfere with the signal transfer.
- Turn on the speaker system Bluetooth mode – press button ⑤ several times until the indicator ① will start blinking blue color frequently.
- It is necessary to select the search mode of devices with Bluetooth on a signal source (telephone, notebook, smartphone, etc.). "SVEN PS-250BL" or "SVEN PS-270", message will be displayed on the screen which is to be connected to\*.
- When connection is successful, there will be a short beep and the indication of the search mode on speaker system is over\*\*.
- The indicator ① blinks blue shortly during the data exchange with a device connected via Bluetooth.

### Radio mode

To improve radio reception, connect the cable 3.5 mm mini-jack (included) to the AUX ⑭ or USB-microUSB cable (included) to the input ⑬.

- Turn on the speaker system – press button ⑤ several times until, the radio mode will not turn on. Short press the button ⑧ activates auto search mode. After scanning completion, the first scanned radio station will start to operate automatically. With buttons ⑦ and ⑨ select a desired radio station.

### MP3 player mode

**Attention! The file system of a micro SD or USB flash carrier is FAT32. Maximum volume is 32 GB. It is not recommended to use the micro SD Ultra Speed.**

- Insert the USB flash or micro SD carrier into appropriate slot. If the speaker system is in turned on position, the playback will start automatically. Playback/Pause modes are switched over with the help of the button ⑧. Tracks can be controlled by buttons ⑦ (previous track) and ⑨ (next track).

### The use in the wired mode (AUX)

- Speaker system can be used as an external device for amplifying any audio source with a 3.5 mm output mini-jack. To do this, connect a cable mini USB, plug 3.5 mini-jack to the audio output AUX ⑭.

\* You might have to enter "0000" code to connect some models of devices via Bluetooth.

\*\* If the item has been already registered in the device list of a source, then the second search mode activation is not obligatory. Choose the item name "SVEN PS-250BL" or "SVEN PS-270" and the "connect" command on the source.

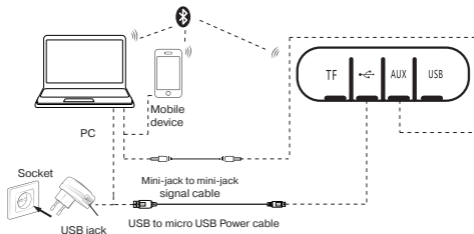


Fig. 2. Connection diagram

## TECHNICAL SPECIFICATIONS

Parameter, measurement unit	Value
Frequency range, Hz	speaker: 100 – 20 000; microphone: 50 – 16 000
Output power (RMS), W:	10 (2 × 5)
Membrane, mm	Ø 50
Bluetooth supported profiles	HSP, HFP, A2DP, AVRCP
Radius of operation, m	up to 10
Battery operation time, h	up to 20
Battery capacity, mA / h	2200
Power supply, V	USB/DC5
Cable length, m	0.5
Weight, g	840
Dimensions, mm	230 × 90 × 90

**Notes.** Technical specifications given in this table are supplemental information and cannot give occasion to claims. Technical specifications and package contents are subject to change without notice due to the improvement of SVEN production.

Technical support is on [www.sven.fi](http://www.sven.fi).

## Portable Speaker System with Bluetooth and FM-radio

# SVEN®



**Model: PS-250BL, PS-270**

Импортер в России: ООО «РЕГАРД», 105082,  
г. Москва, ул. Фридриха Энгельса, д. 75, стр. 5.  
Уполномоченная организация в России: ООО «РТ-Ф»,  
105082, г. Москва, ул. Фридриха Энгельса, д. 75, стр. 5.

Условия гарантийного обслуживания смотрите  
в гарантийном талоне или на сайте [www.sven.fi](http://www.sven.fi).

Гарантийный срок: 12 мес.

Срок службы: 2 года.

Производитель: «СВЕН ПТЕ. Лимитед»,  
176 Джу Чиаг Роуд, № 02-02, Сингапур, 427447.

Произведено под контролем «Свен Скандинавия  
Лимитед», 48310, Финляндия, Котка,  
Котлахдентие, 15. Сделано в Китае.

Manufacturer: SVEN PTE. LTD, 176 Joo Chiat Road,  
№ 02-02, Singapore, 427447. Produced under the  
control of Oy Sven Scandinavia Ltd. 15, Kotolahdentie,  
Kotka, Finland, 48310. Made in China.

® Registered Trademark of Oy SVEN  
Scandinavia Ltd. Finland.



## PS-250BL PS-270