

# SVEN<sup>®</sup>

2.1 Multimedia Speaker  
System

## OPERATION MANUAL



**MS-2020**

[www.sven.fi](http://www.sven.fi)

***Congratulations on your purchase of the Sven speaker system!*****COPYRIGHT**

© 2019. SVEN PTE. LTD. Version 1.0 (V 1.0).

This Manual and information contained in it are copyrighted. All rights reserved.

**TRADEMARKS**

All trademarks are the property of their legal holders.

**NOTICE OF RESPONSIBILITY RESTRICTION**

Despite the exerted efforts to make this Manual more exact, some discrepancies may occur. The information in this Manual is given on «as is» terms. The author and the publisher do not bear any liability to a person or an organization for loss or damage which has arisen from the information contained in this Manual.

**CONTENTS**

<b>1. BUYER RECOMMENDATIONS</b> .....	<b>2</b>
<b>2. PACKAGE CONTENTS</b> .....	<b>3</b>
<b>3. SAFETY PRECAUTIONS</b> .....	<b>3</b>
<b>4. TECHNICAL DESCRIPTION</b> .....	<b>3</b>
<b>5. PREPARATION AND OPERATION</b> .....	<b>6</b>
<b>6. OPERATION MODES</b> .....	<b>7</b>
<b>7. TROUBLESHOOTING</b> .....	<b>9</b>
<b>8. TECHNICAL SPECIFICATIONS</b> .....	<b>9</b>

**1. BUYER RECOMMENDATIONS**

- Unpack the device carefully. Make sure there are no accessories left in the box. Check up the device for damage; if the product was damaged during transportation, address the firm which carried out the delivery; if the product functions incorrectly, address the dealer at once.
- Check up the package contents and availability of the warranty card. Make sure the warranty card has a shop stamp, a legible signature or the seller's stamp and purchase date, and the goods number corresponds to that in the warranty card. Remember: in case of warranty card loss or discrepancy of numbers you forfeit the right for warranty repairs.
- Do not switch on the speaker system immediately after you bring it into a room from environment with negative temperature! After unpacking, the speaker system should be kept in conditions of room temperature for at least 4 hours.
- Before installing and using the speaker system, read this Manual carefully and keep it for future reference.
- Shipping and transportation equipment is permitted only in the original container.
- Does not require special conditions for realization.
- Dispose of in accordance with regulations for the disposal of household and computer equipment.

***Technical support is on [www.sven.fi](http://www.sven.fi).***

## 2. PACKAGE CONTENTS

- Subwoofer — 1 pc.
- Satellites — 2 pcs.
- Remote control (RC) — 1 pc.
- AAA type batteries — 2 pcs.
- Signal cable — 1 pc.
- Antenna wire — 1 pc.
- Operation manual — 1 pc.
- Warranty card — 1 pc.

## 3. SAFETY PRECAUTIONS



**Caution! High voltage inside! To avoid the risk of electric shock do not open or touch elements inside.**

- To avoid electric shock, do not open the MSS and do not perform repairs by yourself. Service and repairs should be performed only by qualified specialists in an authorized service center. The list of authorized service centers is available on [www.sven.fi](http://www.sven.fi)
- Do not allow the circuit of wires (including the grounded ones) between the speakers, on the power amplifier or the ground, for it causes damage to the power amplifier output stage.
- Do not touch the MSS power cord plug pins for 2 seconds after unplugging it from the mains.
- Do not put foreign objects inside the holes of the MSS.
- Protect the MSS from high humidity, water and dust.
- Protect the MSS from heating: do not place it closer than 1 m from a heat source. Do not expose it to direct sunlight.
- Do not place any open flame sources on or close to MSS.
- Do not place the MSS in poorly ventilated areas. Leave an air gap of 10 cm or more. When operating the MSS, do not put any devices on it, do not cover it with cloth or other objects preventing it from cooling.
- Do not use any chemical agents for cleaning. Clean it with dry soft cloth only.





## 4. TECHNICAL DESCRIPTION

MS-2020 2.1 Multimedia Speaker System (MSS) is designed to play music and sound games, movies, etc. The MSS has a built-in power amplifier and audio cables allowing to connect it to virtually any audio source (TV, PC, etc.) without using an additional power amplifier. The MSS has a built-in FM radio, Bluetooth-module and audio player. Remote control is included.

### Special features

- Speaker system is compatible with PCs, DVD/Media-players, mobile devices and other sound sources.
- Bluetooth wireless signal transmission.
- Built-in player for audio files from external storage devices.
- Built-in FM radio.
- USB flash port and SD card slot.
- LED display.
- Remote control.
- Wooden (MDF) cabinets of the subwoofer and satellites.

**Subwoofer control panels:**

- ① LED display
- ② /SOURCE: switch button of AUX/PC/Bluetooth/FM/USB/SD (short press); On/Off button (long press)
- ③ : previous track (short press in the Player and Bluetooth mode); previous station\* (short press in the Radio mode)
- ④ Volume level control knob
- ⑤ /SCAN: Play/Pause (short press in the Player mode); Start/Stop auto scan (long press in the Radio mode)
- ⑥ : next track (short press in the Player and Bluetooth mode); next station\* (short press in the Radio mode)
- ⑦ ANTENNA: radio antenna input jack
- ⑧ AUX/PC: jacks to connect PC, mobile devices, and other audio sources
- ⑨ OUTPUT: jack to connect satellites
- ⑩ Power cord
- ⑪ ON/OFF: power switch
- ⑫ slot for SD cards\*\* containing MP3, WAV audio files
- ⑬ USB: port for a USB flash device\*\* containing MP3, WAV audio files

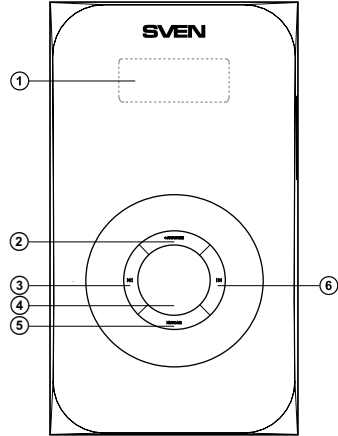


Fig. 1. Subwoofer control panel

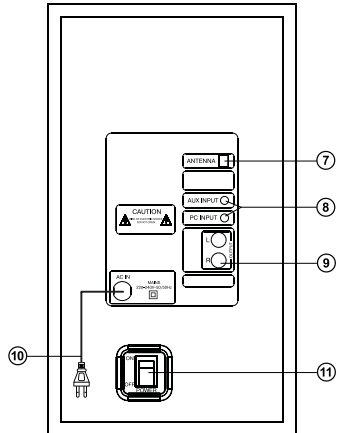


Fig. 2. Subwoofer rear panel

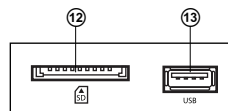


Fig. 3. Side panel

**Remote control**

- ① : power switch
- ② SOURCE: switch button of AUX/PC/Bluetooth/FM/USB/SD.
- ③ TONE/LOUD: treble and bass level up/down (short press ); on/off loudness mode (long press)
- ④ TUNE-/+ : manual band scanning (in the Radio mode)
- ⑤ VOL+/-: volume level control buttons
- ⑥ : previous track (in the Player and Bluetooth mode); previous station\* (in the Radio mode)
- ⑦ /AUTO: Play/Pause (in the Player and Bluetooth mode); auto scan start/stop (long press in the Radio mode)
- ⑧ : next track (in the Player and Bluetooth mode); next station\* (in the Radio mode)
- ⑨ 0-9: numeric pad
- ⑩ MUTE: sound on/off button
- ⑪ REPEAT/RESET: repeat mode selection button (short press in the Player mode);  
ONE — repeats the current track;  
RAND — play tracks in the random order;  
ALL — plays all tracks in the sequential order;  
return to default settings (long press)
- ⑫ SAVE/DEL: memorize selected frequency (short press in the Radio mod);  
deleting a memorized station (long press in the Player mode)

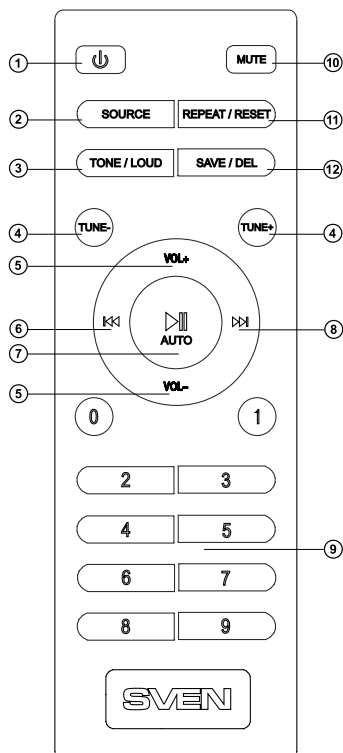


Fig. 4. Remote control

**Notes.** Use the RC at an angle no more than 30° at a distance of no more than 7 meters. If the remote control does not operate, check the batteries or replace the discharged batteries with new ones. Remove the batteries from the RC if you don't intend to use it for a long time (more than one week).

\* The frequencies are switched if stations have been preset in the memory.

\*\* The storage device must be formatted as FAT, FAT32. Memory cards SDHC class 10 or less can be used. Connection of external hard disks other than USB flash drive is not recommended, otherwise it can cause the MSS damage.

## 5. PREPARATION AND OPERATION

### Speaker placement

- Place the speakers symmetrically to the listener at least one meter away. The subwoofer emits non-directional sound, therefore it can be located in any place of the room where it sounds the best.
- Place MSS as far away as possible from monitors and TV sets, to avoid insignificant image distortion.

### Installation and operation

MS-2020 speaker system can be connected to virtually any audio devices: PCs, laptops, etc. (see connection diagram in Fig. 5).

- Before making any connections, make sure the MSS is off and unplugged. Then connect speakers to the subwoofer OUTPUT L/R ⑨ jacks using built-in audio cables. Connect the right speaker to the subwoofer OUTPUT R and the left speaker — to the OUTPUT L (see connection diagram in Fig. 5).

#### **Note. Check the fixation connectors.**

- To wired connect the MSS use mini-jack to mini-jack signal cable (included). Connect the subwoofer to the mains outlet with the power cord ⑩.
- Turn on the MSS power supply using switch (⑪, ON) (ON position) on the subwoofer rear panel.
- Turn on the MSS by pressing button ⑫ on the front panel or ⑬ button on the remote control. Select a desired signal source by pressing short SOURCE ⑭ button on the control panel or pressing SOURCE ⑮ button on the remote control.
- Adjust the master volume as desired with knob ⑯ on the control panel or with the VOL+/- buttons ⑰ on the remote control.

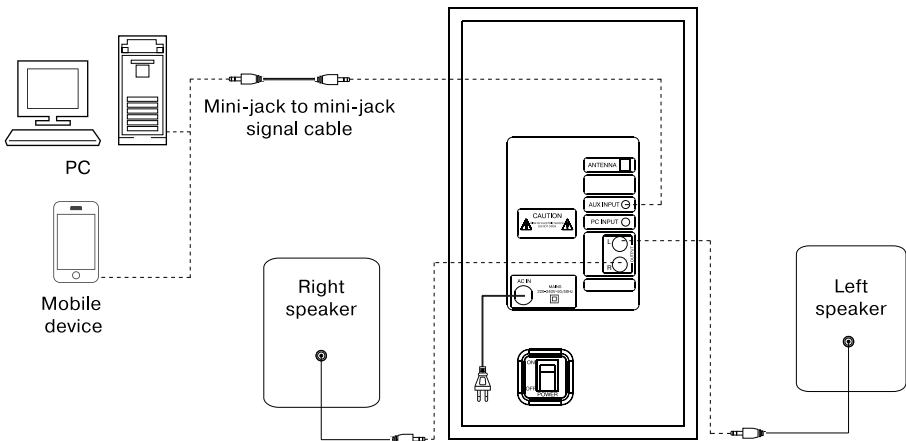


Fig. 5. Connection diagram

- In order to have the high-fidelity reception orient the antenna in direction of radio signal when listening to the radio, first connecting the antenna to ANTENNA jack ⑦.
- When the MSS operation is over, mind to switch it off using switch ⑪ (OFF position) and unplug the power cord ⑩ from the socket.

## 6. OPERATION MODES

### Player Mode

- The system will enter the Player mode automatically when a carrier (USB flash or SD card) is connected to corresponding ports ⑫ or ⑬, or press SOURCE button ② on the front panel of the subwoofer or SOURCE button ② on the remote control.
- To select a track, you can directly enter its number on the remote control using the numeric pad buttons ⑨ or select it with the buttons ③ or ⑥ on the front panel. The display ① will show the track number for a short time and then the playback time elapsed.

### Bluetooth Mode

- In order to transmit signal in this mode it is necessary at first to connect the device with a signal source (see Fig. 6). For this purpose select the Bluetooth mode using SOURCE button ② on the front panel of the subwoofer or SOURCE button ② on the remote control. The speaker system will enter the search mode «bt» mode will be shown on the display ①.
- It is necessary to select the search mode of devices with Bluetooth on a signal source (telephone, notebook, smartphone, etc.). «SVEN MS-2020», message will be displayed on the screen which it should be connected to\*.
- The «bt» lights continuously when connection is successful. If there is no connection, lettering «bt» will blink. In this case the system should be switched over to the search mode once again (turn off and turn on Bluetooth mode)\*\*.

### Radio Mode

- Use SOURCE button ② on the front panel of the subwoofer or SOURCE button ② on the remote control to enter the Radio mode. The display ① will backlight the current adjustment frequency.
- Press and hold SCAN button ⑤ on the front panel of the subwoofer or button AUTO ⑦ on the remote control short to auto scan and memorize the found stations. The display ① shows the frequency being scanned, when a radio station is being memorized, the display shows its assigned sequence number for a short moment.
- For manual scanning, use buttons TUNE +/- ④ on the remote control (up/down the frequency range).
- To store a radio station in memory, short pressing button SAVE ⑫ on the remote control, then select the cell with the buttons ⑥, ⑨ and again briefly presses button SAVE ⑫.
- If preset radio stations are available in the memory, you can switch from one to another by short pressing buttons ③ and ⑥ on the front panel of the subwoofer or buttons ⑥ and ⑥ on the remote control.

\* You might have to enter "0000" code to connect some models via Bluetooth.

\*\* If an item has been already registered in the device list of sources, then the second search mode activation is not needed. Choose only the item name and the "connect" command on the source.

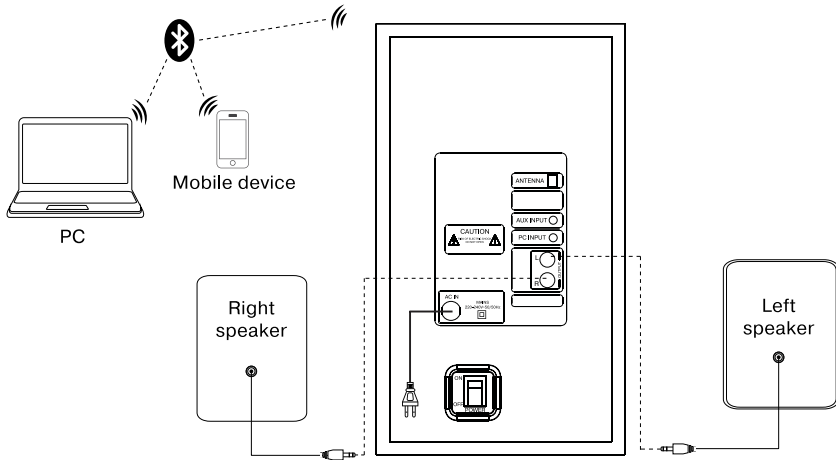


Fig. 6. Bluetooth module connection diagram

**“Line input” Mode (PC/AUX)**

- Press SOURCE button ② on the front panel of the subwoofer or SOURCE button ② on the remote control to switch to the PC/AUX mode. The display ① will show «PC/AUX» inscription.

**Note.** Due to the constant development of the software, the actual MSS operation may differ from described in this Manual. The most recent version of the Manual is available at [www.sven.fi](http://www.sven.fi).



## 7. TROUBLESHOOTING

Problem	Cause	Solution
The MSS does not turn on.	The MSS isn't connected to a mains outlet.	Check the connection.
	The power switch is off.	Turn on the switch.
No sound or the sound is too quiet.	Volume level is set at minimum value.	Adjust the volume control knob.
	Improperly connected audio source.	Connect the audio sources correctly.
Distortion of sound.	Large amplitude of the input signal.	Turn down the source volume and the MSS volume
The remote control is not working.	The batteries are discharged.	Replace the batteries with new ones.

If none of the above methods can solve the problem, please seek professional advice at your nearest service center. Never attempt to repair the product yourself.

## 8. TECHNICAL SPECIFICATIONS

Parameter, measurement unit	Value
Output power (RMS), W: subwoofer satellites	55 (30 + 2 × 12.5) 30 2 × 12.5
Frequency response, Hz: subwoofer satellites	40 – 200 150 – 20 000
Speaker diameter, mm: subwoofer satellites	Ø 125 Ø 75
Power supply, V/Hz	~230/50
Dimensions, mm: subwoofer satellites (one speaker)	185 × 298 × 335 90 × 137 × 93
Weight, kg	4

**Notes.** *Technical specifications given in this table are supplemental information and cannot give occasion to claims. Technical specifications and package contents are subject to change without notice due to the improvement of SVEN production.*

## 2.1 Multimedia Speaker System

# SVEN®

Manufacturer: SVEN PTE. LTD, 176 Joo Chiat Road, № 02-02, Singapore, 427447.  
Produced under the control of Oy Sven Scandinavia Ltd. 15, Kotolahdentie, Kotka, Finland, 48310. Made in China.

® Registered Trademark  
of Oy SVEN  
Scandinavia Ltd. Finland.



0B0514

## MS-2020