

SVEN®
YOU WANT – WE CAN

2.1 Multimedia Speaker System

OPERATION MANUAL



BTR2-10

www.sven.fi

2.1 Multimedia Speaker System

BTR2-10

Congratulations on your purchase of the Sven speaker system!

COPYRIGHT

© 2014. SVEN PTE. LTD. Version 1.0 (V 1.0).

This Manual and information contained in it are copyrighted. All rights reserved.

TRADEMARKS

All trademarks are the property of their legal holders.

NOTICE OF RESPONSIBILITY RESTRICTION

Despite the exerted efforts to make this Manual more exact, some discrepancies may occur. The information in this Manual is given on «as is» terms. The author and the publisher do not bear any liability to a person or an organization for loss or damage which has arisen from the information contained in this Manual.

CONTENTS

1. BUYER RECOMMENDATIONS	1
2. PACKAGE CONTENTS	2
3. SAFETY PRECAUTIONS	2
4. TECHNICAL DESCRIPTION	2
5. PREPARATION AND OPERATION	5
6. TROUBLESHOOTING	9
7. TECHNICAL SPECIFICATIONS	10

1. BUYER RECOMMENDATIONS

- Unpack the device carefully. Make sure there are no accessories left in the box. Check up the device for damage; if the product was damaged during transportation, address the firm which carried out the delivery; if the product functions incorrectly, address the dealer at once.
- Check up the package contents and availability of the warranty card. Make sure the warranty card has a shop stamp, a legible signature or the seller's stamp and purchase date, and the goods number corresponds to that in the warranty card.
- Do not switch on the speaker system immediately after you bring it into a room from environment with negative temperature! After unpacking, the speaker system should be kept in conditions of room temperature for at least 4 hours.
- Before installing and using the speaker system, read this Manual carefully and keep it for future reference.

Technical support is on www.sven.fi.

2. PACKAGE CONTENTS

- Subwoofer — 1 pc
- Satellites — 2 pcs
- Audio cable — 2 pcs
- 2RCA to 2RCA signal cable — 1 pc
- Remote control — 1 pc
- CR2025 battery — 1 pc
- FM antenna — 1 pc
- AM antenna — 1 pc
- Operation manual — 1 pc
- Warranty card — 1 pc

3. SAFETY PRECAUTIONS



Caution! High voltage inside! To avoid the risk of electric shock do not open or touch elements inside.

- To avoid electric shock, do not open the MSS and do not perform repairs by yourself. Service and repairs should be performed only by qualified specialists in an authorized service center. The list of authorized service centers is available on www.sven.fi
- Do not allow the circuit of wires (including the grounded ones) between the speakers, on the power amplifier or the ground, for it causes damage to the power amplifier output stage.
- Do not touch the MSS power cord plug pins for 2 seconds after unplugging it from the mains.
- Disconnect the MSS from the mains system during a fuse replacement. Use fuses of the same type and rated value. Do not use hand-made fuses.
- Do not put foreign objects inside the holes of the MSS.
- Protect the MSS from high humidity, water and dust.
- Protect the MSS from heating: do not place it closer than 1 m from a heat source. Do not expose it to direct sunlight.
- Do not place any open flame sources on or close to MSS.
- Do not place the MSS in poorly ventilated areas. Leave an air gap of 10 cm or more. When operating the MSS, do not put any devices on it, do not cover it with cloth or other objects preventing it from cooling.
- Do not use any chemical agents for cleaning. Clean it with dry soft cloth only.

4. TECHNICAL DESCRIPTION

BTR2-10 2.1 Multimedia Speaker System (MSS) equipped with an AM/FM tuner is designed for playing music and sounding games, movies, etc., as well as being used as a radio tuner. Due to the built-in amplifier, the speaker system can be connected to any audio source. Remote control is included.

2.1 Multimedia Speaker System

BTR2-10

Special features

- Built-in transformer power source
- Built-in AM/FM tuner
- Two stereo AV inputs for connection to various audio devices
- Electronic audio switch
- Full-function remote control
- Master volume control, bass/midrange/treble control, subwoofer volume control
- LED display
- Magnetic shielding
- MDF subwoofer and satellites cabinets

Subwoofer control panel

- ① Display screen
- ② MUTE: mute button
- ③ SUB+: subwoofer volume up
- ④ SUB-: subwoofer volume down
- ⑤ RESET: default reset
- ⑥ INPUT: audio source selection
- ⑦ STANDBY: standby mode button
- ⑧ VOLUME: master volume control knob

Subwoofer rear panel (Fig. 2)

- ① FM ANT: FM antenna terminal
- ② AN GND/AM ANT: AM antenna terminals
- ③ CD-1: audio source input
- ④ CD-2: audio source input
- ⑤ 2.1CH OUTPUT: audio outputs for left and right speakers
- ⑥ POWER: power ON/OFF switch
- ⑦ Power cord

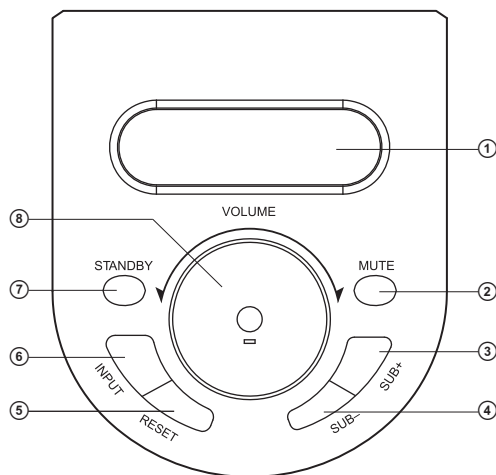


Fig. 1. Subwoofer control panel

2.1 Multimedia Speaker System

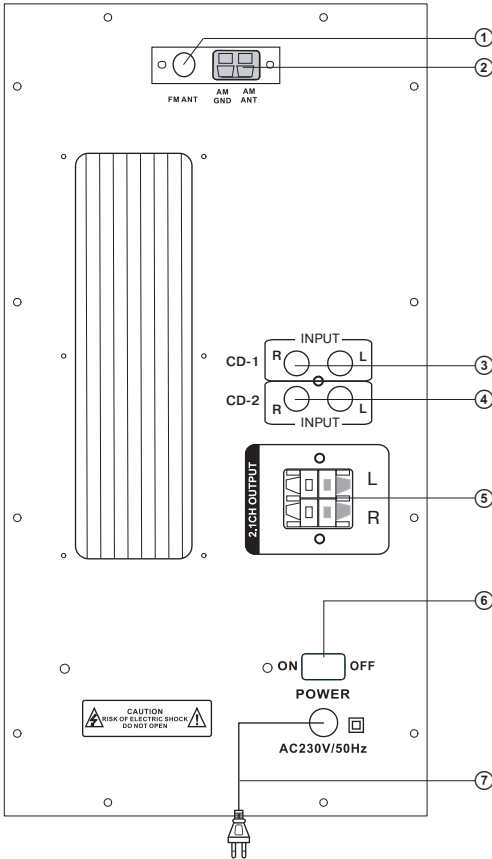


Fig. 2. Subwoofer rear panel

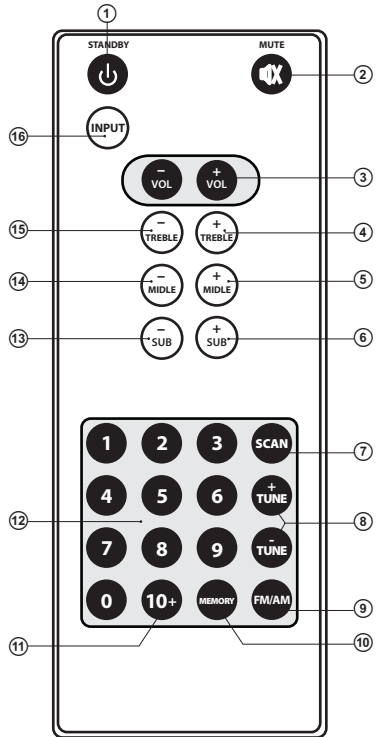


Fig. 3. Remote control

Remote control

- ① STANDBY: STANDBY mode button
- ② MUTE: MUTE button
- ③ VOL+/-: volume control buttons
- ④ TREBLE +: treble level up
- ⑤ MIDDLE +: midrange level up
- ⑥ SUB +: subwoofer volume up
- ⑦ SCAN: tuner auto scan
- ⑧ TUNE+/-: tuner manual adjustment
- ⑨ FM/AM: FM and AM band selection
- ⑩ MEMORY: button for saving tuner settings
- ⑪ 10+: numerical keyboard multiplier
- ⑫ 0 – 9: numerical keyboard buttons
- ⑬ SUB -: subwoofer volume down
- ⑭ MIDDLE -: midrange level down
- ⑮ TREBLE -: treble level down
- ⑯ INPUT: audio source selection

2.1 Multimedia Speaker System

BTR2-10

Remote control battery installation

- Open the battery compartment on the back of the remote control.
- Put in the CR2025 battery (included).
- Close the battery compartment.

Notes:

- **Use the remote control at an angle no more than 30°, no more than 7 meters away.**
- **Direct the remote control at the IR receiver display on the subwoofer.**
- **If the remote control does not work, check the battery or replace the discharged battery with a new one.**
- **Remove the battery from the remote control if you don't intend to use it for a long time (more than a week).**

5. PREPARATION AND OPERATION

Speaker placement

- Place the speakers symmetrically to the listener at least one meter away. The subwoofer emits non-directional sound, therefore it can be located in any place of the room where it sounds the best.
- Place MSS far away from monitors and TV sets, as insignificant image distortion in these supersensitive devices is possible.

MSS connecting and control

BTR2-10 2.1 Multimedia Speaker System (MSS) can be attached to virtually any audio source (see Fig. 4).

- Before connecting, make sure that the MSS is unplugged. Then, connect the subwoofer to the satellites using the audio cables supplied (see Fig. 4), use correct polarity.
- To connect the speakers to a CD / DVD-player, TV, PC sound card, etc., use the 2RCA to 2RCA stereo signal cable. Be sure to connect the left and right channels. Insert the left RCA-jacks into left ports of the amplifier (usually white), and the right RCA-jacks — into right ports of the amplifier (usually red).

Note. The accuracy and reliability of the connection of cables directly affects sound quality. Check for absence of contact between bared wires and metal parts of the equipment.

Installation and connection of antennas

FM antenna connection

- Insert the included room FM antenna into FM ANT terminal on the subwoofer rear panel, as shown in the diagram. Install the FM antenna in such a way that reception quality is satisfactory, and then fix the position of the antenna.

Note. External 75 Ohm FM antenna should be used for buildings with weak FM signal. Typically, a three-element antenna is enough, but in areas with weak FM signal it is recommended that you use an FM antenna with 5 or more elements.

2.1 Multimedia Speaker System

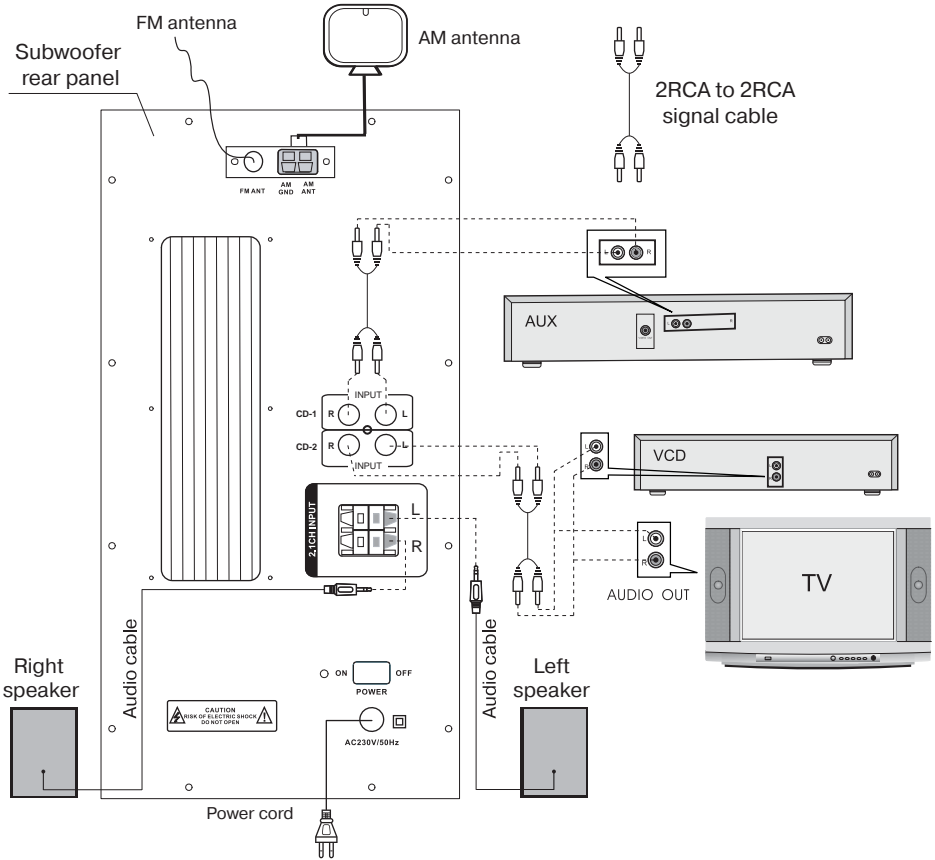


Fig. 4. Connection diagram

2.1 Multimedia Speaker System

BTR2-10

AM antenna connection

- To install the loop antenna, fix the bracket to the hole at the bottom of the antenna as shown below, Fig. 5 (step 1).

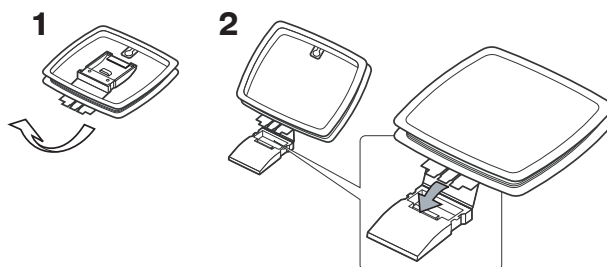


Fig. 5. AM antenna connection

- Turn the visor of AM terminal anticlockwise to loosen it slightly, insert the cord of the loop antenna under the visor and turn the visor clockwise to firmly clamp the cord (step 2). Gently pull the cord to make sure it is securely fixed. Install the antenna in a niche or hang it on the window frame, that is in a place where reception is better. Place all other cables (power cable, speaker cables or connecting wires) far away from the antenna.
- After that, connect the loop antenna to AM ANT and AM GNT terminals on the rear panel of the subwoofer (see connection diagram, Fig. 4).

Note. When the reception is poor in the inner AM loop antenna, it is recommended that an external AM antenna be used (not included).

Operation guide

Switching On

- To switch on the subwoofer, plug the power cord of the subwoofer into the mains outlet and shift the POWER On/ Off switch on the rear panel into the ON position. The display (①, Fig. 1) on the front panel will illuminate.

Standby mode (STANDBY)

- STANDBY mode feature is designed to quickly switch on the speaker system and save power consumption. Press STANDBY (①, Fig. 3) on the remote control or the STANDBY button (⑦, Fig. 1) on the control panel to activate/deactivate this feature. If the STANDBY button is on, the corresponding inscription on the display of the subwoofer will illuminate. Press it again, and the speaker system will return to the operation mode.

Audio source selection

- There are two inputs (CD-1 and CD-2) on the rear panel of the MSS. To use a stereo audio source, connect it to thy INPUT terminals ③ and ④ of the speaker system, as shown in Fig. 4.
- Depending on the required connection, select the desired audio source with the INPUT button (⑥, Fig. 3) on the remote control or control panel of the subwoofer (⑥, Fig. 1). The corresponding inscription on the display of the subwoofer will illuminate.

Turning on and setting the tuner

- Press SCAN ⑦ and FM/AM ⑨ on the remote control to turn on the tuner and select FM or AM.
- **Manual setting.** Press TUNE + or TUNE- buttons ③ on the remote control for finetuning radio station frequency (see tuning steps in Technical Specifications).
- **Auto search.** By holding SCAN ⑦ on the remote control for more than 1 second, you turn on the scanning of the FM-band starting with 87 MHz frequency, the found radio stations being memorized sequentially: CH 01, CH 02, CH 03, etc. Scanning of the FM-band will continue until 108 MHz frequency. After scanning, the first found radio station turns on.
- Additionally, the desired broadcast can be quickly turned on with numeric keypad buttons ⑪ and ⑫ on the remote control, having saved systems of 20 FM radio stations and 20 AM radio stations. To save the found radio station, press MEMORY ⑩ on the remote control (CH _ will illuminate on the display), then enter its number (from 0 to 19) with numeric keypad buttons ⑪ and ⑫ on the remote control, which will illuminate on the display (for example, CH 09). After saving the required quantity of radio stations, enter the number of the desired radio station on the remote control with numerical keypad buttons ⑪ and ⑫ for quick search.

Volume control

- Press VOL+ or VOL- (③, Fig. 3) on the remote control or turn the VOLUME knob (⑧, Fig. 1) on the front panel of the subwoofer to regulate (increase/decrease) volume level.

Bass, midrange, and treble control

- Level of bass, midrange and treble is adjusted with buttons TREBLE+ ④ and TREBLE- ⑱, MIDDLE+ ⑤ and MIDDLE- ⑲, SUB+ ⑥ and SUB- ⑲ on the remote control. Bass level can be also adjusted with SUB+ ③ and SUB- ④ on the front panel of the subwoofer.

Mute feature

- Press MUTE ② on the remote control or the same button on the subwoofer control panel to temporarily turn off the sound. Press this button again to turn on the sound.

Note. *If the speaker system is not used for a long time, mind to switch off the device by using the POWER On/Off switch and unplug it.*

2.1 Multimedia Speaker System

BTR2-10

6. TROUBLESHOOTING

Problem	Cause	Solution
The MSS does not turn on.	The MSS isn't connected to a mains outlet.	Check the connection.
	Power switch is off.	Turn on the switch.
No sound.	Volume level is set at minimum value.	Adjust the volume control knob.
	Improperly connected audio source.	Connect audio sources correctly.
There is too quiet sound of speakers.	Volume level is set at minimum value.	Adjust the volume control knob.
Distortion of sound.	Large amplitude of the input signal.	Turn down the source volume and MSS volume.
Remote control is not working.	The battery is discharged.	Replace the battery with a new one.
	There is direct sunlight.	Change the location of the subwoofer or remote control.
	Obstacle between the remote control and the subwoofer receiver.	Change the subwoofer or remote control location.
FM/AM tuner is not working.	FM/AM tuner is not connected.	Connect the FM/AM antenna.
	Poor reception of antennas.	Connect an external FM antenna or AM antenna.

If none of the above methods can solve the problem, please seek professional advice at your nearest service center. Never attempt to repair the product yourself.

7. TECHNICAL SPECIFICATIONS

Parameter, measurement unit	Value
Speaker system	
Output power (RMS), W subwoofer satellites	80 (50 + 2 × 15) 50 2 × 15
Frequency response, Hz subwoofer satellites	20 – 120 120 – 20 000
S/N ratio, dB	≥ 70
Speaker diameters, mm subwoofer satellites	Ø 165 Ø 38 + Ø 102
Power supply, V/Hz	~220/50
Dimensions (W × H × D), mm subwoofer satellites	220 × 400 × 340 140 × 240 × 150
Weight, kg	12.0
Tuner	
Frequency bands: AM (at 9 kHz step), kHz AM (at 10 kHz step), kHz FM (at 100 kHz step), MHz	522 ~ 1611 530 ~ 1610 87 ~ 108
S/N ratio: AM, dB FM, dB	≥ 30 ≥ 40

Notes:

- **Technical specifications given in this table are supplemental information and cannot give occasion to claims.**
- **Technical specifications and package contents are subject to change without notice due to the improvement of SVEN production.**

2.1 Multimedia Speaker System

SVEN®
YOU WANT – WE CAN



Модель: **BTR2-10**

Импортер в России: ООО «СКАНДИТРЕЛ», 111024, РФ,
г. Москва, ул. Авиамоторная, д. 65, стр. 1.

Уполномоченная организация в России: ООО «РТ-Ф»,
105082, г. Москва, ул. Фридриха Энгельса, д. 75, стр. 5.

Условия гарантийного обслуживания смотрите
в гарантийном талоне или на сайте **www.sven.fi**.

Гарантийный срок: 12 мес.

Срок службы: 5 лет.

Производитель: «СВЕН ПТЕ. Лимитед»,
176 Джу Чиаг Роуд, № 02-02, Сингапур, 427447.

Произведено под контролем «Свен Скандинавия
Лимитед», 48310, Финляндия, Котка,
Котolahdentие, 15. Сделано в Китае.

Manufacturer: SVEN PTE. LTD, 176 Joo Chiat Road,
№ 02-02, Singapore, 427447. Produced under the
control of Oy Sven Scandinavia Ltd. 15, Kotalahdentie,
Kotka, Finland, 48310. Made in China.

© Registered Trademark of Oy SVEN
Scandinavia Ltd. Finland.

BTR2-10