

SVEN[®]
YOU WANT - WE CAN

Wireless Optical Mouse

USER'S MANUAL



RX-410W

www.sven.fi

Congratulations on purchasing the SVEN PC mouse!

Please read the following instructions carefully before connecting, operating or adjusting this product. Besides, please keep this manual in a safe place for future reference.

COPYRIGHT

© 2011. SVEN Company Ltd. Version 1.0 (V 1.0). This manual and information contained in it are copyrighted. All rights reserved.

TRADEMARKS

All trademarks are the property of their legal holders.

NOTICE OF RESPONSIBILITY RESTRICTION

Despite the exerted efforts to make this manual more exact, some discrepancies may occur. The information of this manual is given on «as is» terms. The author and the publisher do not bear any liability to a person or an organization for loss or damages which have arisen from the information contained in the given manual.

CONTENTS

1. SPECIAL FEATURES	2
2. PACKAGE CONTENTS	2
3. SYSTEM REQUIREMENTS	2
4. DESCRIPTION	3
5. INSTALLATION	3
6. TROUBLE SHOOTING	6
7. TECHNICAL SPECIFICATION	6

Technical support is on www.sven.fi

1. SPECIAL FEATURES

- RF2.4GHz USB nano receiver (range – up to 10 m)
- High-precision optical technology. Effective on most surfaces
- High-speed operation
- 2 + 1 buttons
- Scroll wheel
- Resolution 1000 dpi
- Interface USB
- 2 AAA alkaline batteries
- Rubberized mouse casing
- Drivers installation not required for Windows 2000/ME/XP/Vista/7
- Convenient for both right and left hand
- Perfect energy system increases battery life up to 6 months (see comparison table)

Operating mode	RX-410W	Other mice
During work	4.8 — 6 mA	10 mA
Motionless	0.5 — 0.55 mA	8 mA
Standby mode	0.1 — 0.12 mA	3 mA
Sleeping mode	0.03 — 0.05 mA	0.15 mA

2. PACKAGE CONTENTS

- Optical mouse — 1 pc
- 2.4 GHz USB nano receiver — 1 pc
- AAA type batteries — 2 pcs
- User's manual — 1 pc
- Warranty card — 1 pc

3. SYSTEM REQUIREMENTS

- Windows 2000/XP/Vista/7 or higher, Mac OS 10.4 or higher, Linux
- Free USB port

4. DESCRIPTION

- ① Scroll wheel
- ② Optical sensor
- ③ Battery compartment
- ④ Nano receiver
- ⑤ USB connector

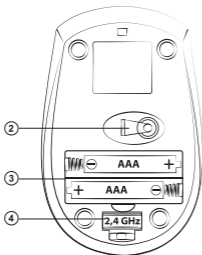


Fig. 2. Bottom view

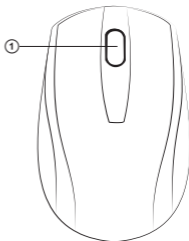


Fig. 1. Top view

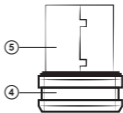


Fig. 3. Nano receiver

5. INSTALLATION

- Open cover of the mouse battery compartment ③, insert two AAA type batteries into the battery compartment matching polarity, and close the cover of the battery compartment (see Fig. 4).
- Pull out the nano receiver ④ from the mouse (Fig. 5) and connect it to an available PC USB port without switching off the PC (Fig. 6). To activate the mouse, press any button of the mouse or turn the scroll wheel. If the mouse is connected correctly, it will turn on automatically.

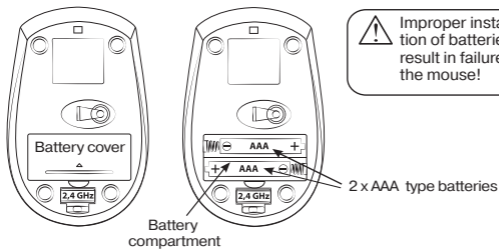


Fig. 4. Batteries installation



Fig. 5. Extraction of the receiver from the mouse case

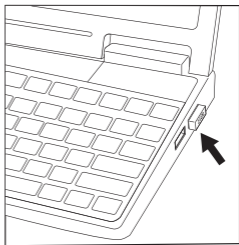


Fig. 6. Receiver connection

- After finishing work, the receiver can be pulled out from the PC USB port and inserted back into the mouse (Fig. 7).
- Do not place the receiver in a metal confined space (table drawer, box, safe), as a metal screen does not transmit radio signals.
- If the batteries run down, the mouse works by fits. It means that batteries should be replaced with new ones, as it is shown in Fig. 4. Always install only identical new batteries.

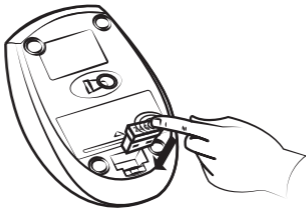


Fig. 7. Fitting the receiver into the mouse case

! Important

- This device meets highest standards of energy conservation. During long pauses in operation the mouse enters the economical Sleep mode. To enter the working mode, just press any button or turn the scroll wheel.

6. TROUBLE SHOOTING

Problem	Solution
The mouse does not work.	<ol style="list-style-type: none"> 1. Make sure that the nano receiver has been inserted into the USB port and its distance to the mouse is less than 10 m. 2. Check if the batteries have been installed correctly. 3. Check if the batteries have run down, replace the batteries with new ones if necessary.
Batteries are in good order, but the mouse still does not work.	Install the software to coordinate the mouse and the receiver. Software can be downloaded from Support on www.sven.fi

7. TECHNICAL SPECIFICATION

Parameter	Value
OS required	Windows 2000/XP/Vista/7
Type of mouse	Wireless 2.4 GHz
Resolution	1000 dpi
Q-ty of buttons	2 + 1
Interface	USB
Conformity with	FCC, CE

Notes:

- **Technical specification given in this table is supplemental information and cannot give occasion to claims.**
- **Technical specification is subject to change without notice due to improvement of SVEN production.**

Wireless Optical Mouse

SVEN®
YOU WANT – WE CAN

Модель: RX-410W

Импортер в России: ООО «СКАНДИТРЕЛ»,
111024, РФ, г. Москва,
ул. Авиамоторная, д. 65, стр. 1.

Уполномоченная организация в России:
ООО «РТ-Ф», 105082, г. Москва, ул. Фридриха
Энгельса, д. 75, стр. 5.

Условия гарантийного обслуживания смотрите
в гарантийном талоне или на сайте **www.sven.fi**
Гарантийный срок: 12 мес.

Срок службы: 2 года.

Произведено под контролем «Свен Скандинавия
Лимитед», 48310, Финляндия, Котка,
Котолахдентие, 15. Сделано в Китае.

Модель: RX-410W

Постачальник/імпортер в Україні: ТОВ «СВЕН
Центр». Київська область, м. Переяслав-

Хмельницький, вул. Героїв Дніпра, 31.
Призначення, споживчі властивості та відомості
про безпеку товару див. у керівництві
користувача.

Умови гарантійного обслуговування дивіться в
гарантійному талоні або на сайті **www.sven.fi**
Гарантійний термін: 12 міс.

Строк служби: 2 роки.

Товар сертифіковано/має гігієнічний висновок.
Шкідливих речовин не містить.
Зберігати в сухому місці.

Виготовлено під контролем «Свен Скандинавія
Лімітед», 48310, Финляндия, Котка, Котолахдентіе,
15. Зроблено в Китаї.

Produced under the control of Oy Sven Scandinavia
Ltd. 15, Kotolahdentie, KOTKA, Finland, 48310.
Made in China.

® Registered Trademark of Oy SVEN
Scandinavia Ltd. Finland.

RX-410W