

SVEN®

Keyboard + Mouse
Wireless Combo Set

USER'S MANUAL



KB-C3400W

www.sven.fi

Congratulations on your purchase of the Sven Keyboard + Mouse Wireless Combo Set!

Please read this User's Manual before using the unit and retain this User's Manual in a safe place for future reference.

COPYRIGHT

© SVEN PTE. LTD. Version 1.0 (V 1.0).

This Manual and information contained in it are copyrighted. All rights reserved.

TRADEMARKS

All trademarks are the property of their legal holders.

NOTICE OF RESPONSIBILITY RESTRICTION

Despite the exerted efforts to make this Manual more exact, some discrepancies may occur. The information in this Manual is given on 'as is" terms. The author and the publisher do not bear any liability to a person or an organization for loss or damage which has arisen from the information contained in this Manual.

UNPACKING

- Unpack the device carefully. Make sure there are no accessories left in the box. Check up the device for damage; if the product was damaged during transportation, address the firm which carried out the delivery; if the product functions incorrectly, address the dealer at once.
- Shipping and transportation equipment is permitted only in the original container.
- Does not require special conditions for realization.
- Dispose of in accordance with regulations for the disposal of household and computer equipment.

CONTENTS

ENG	2
1. SPECIAL FEATURES	3
2. PACKAGE CONTENTS	3
3. SYSTEM REQUIREMENTS	3
4. DESCRIPTION OF SHORTCUT KEYS FUNCTIONS	3
5. INSTALLATION	3
6. CONNECTION	4
7. TROUBLESHOOTING	5
8. TECHNICAL SPECIFICATIONS	5

Technical support is on www.sven.fi.

User's Manual

KB-C3400W

1. SPECIAL FEATURES

- 9 shortcut keys
- Waterproof design
- Classic layout

2. PACKAGE CONTENTS

- Wireless keyboard — 1 pc
- Wireless mouse — 1 pc
- 2.4 GHz USB nano receiver — 1 pc
- Battery AAA type — 1 pc
- Battery AA type — 1 pc
- User's Manual — 1 pc
- Warranty card — 1 pc

3. SYSTEM REQUIREMENTS

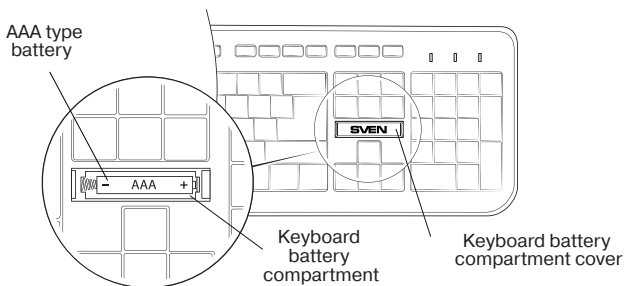
- Windows.
- Free USB port.

4. DESCRIPTION OF SHORTCUT KEYS FUNCTIONS

- | | |
|-------------------------|---------------|
| 🏠 Open home web page | ▶▶ Next track |
| ✉ Starts e-mail program | 🔊 Volume down |
| ⏸ Play/Pause | 🔊 Volume up |
| ■ Turn off media player | 🔇 Mute on/of |
| ◀◀ Previous track | |

5. INSTALLATION

- Open the cover of the mouse battery compartment, insert battery AA type into the battery compartment matching the polarity, and close the cover of the battery compartment.
- Open the cover of the battery compartment at the top of the keyboard, insert AAA battery matching the polarity, and close the cover of the battery compartment.



Please match the polarity when installing the batteries. Incorrect polarity can cause malfunction of the device, which gives no claims for warranty servicing.



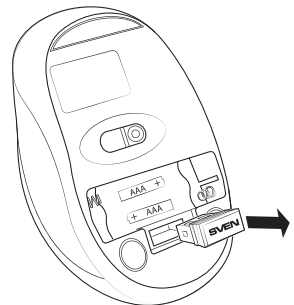
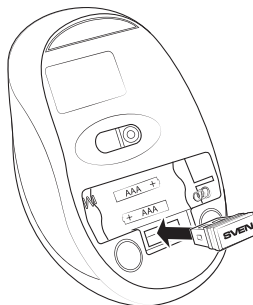
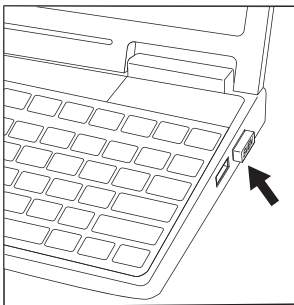
It is necessary to always install only the same type of batteries, because installation of different types of batteries with different levels of charging can cause leaking of one of the batteries, which can damage the device.

6. CONNECTION

- Connect the 2.4 GHz USB nano receiver to a free USB port of your PC.
- To activate the set, press any button of the mouse or turn the scroll wheel. If the connection is correct, the set will turn on automatically.
- After finishing your work, you can pull out the receiver from the PC USB port and insert it into the mouse as shown on the figure below.
- If the mouse or keyboard don't work, connect them to the nano receiver again. To reconnect the mouse to the nano receiver, press its right button and the scroll wheel at the same time and, while holding them, pull out and insert the 2.4 GHz nano receiver back into the USB port. To reconnect the keyboard to the nano receiver, press its «ESC» and «K» buttons at the same time and, while holding them, pull out and insert the 2.4 GHz nano receiver back into the USB port.

Notes:

- **Do not place the receiver into a confined metal space (table drawer, box, safe), as a metal screen does not transmit radio signals.**
- **If batteries run down, there are «lapses» in operation of the mouse or keyboard. In such a case replace the batteries with new ones.**
- **If there is a long pause in operation of the mouse or keyboard, they enter the Sleep mode. To enter the working mode just press any button.**



7. TROUBLESHOOTING

Problem	Solution
The keyboard/mouse is not working.	<ol style="list-style-type: none"> 1. Check whether the batteries have been installed correctly. If necessary, replace the batteries with new ones matching the polarity. 2. Pull out the USB receiver and insert it back, make sure that it is not damaged. 3. We recommend that you address your nearest service center.

If none of the above methods can solve the problem, please seek professional advice at your nearest service center. Never attempt to repair the product yourself.

8. TECHNICAL SPECIFICATIONS

Parameter, measurement unit	Value
Q-ty of keyboard keys	113
Q-ty of shortcut keys	9
Q-ty of mouse buttons	5 + 1 (scroll wheel)
Keyboard layout	Eng/Rus/Ukr
OS compatibility	Windows
Interface	USB
Extrapolated mean life	more than 20 000 000 strokes
Coverage range, m	up to 10
Mouse resolution, dpi	1000/1200/1600
Keyboard dimensions (W × H × L), mm	435 × 25 × 140
Mouse dimensions (W × H × L), mm	105 × 66 × 38
Weight (keyboard + mouse), g	360 and 57

Notes:

- *Technical specifications given in this table are supplemental information and cannot give occasion to claims.*
- *Technical specifications are subject to change without notice due to the improvement of SVEN production.*

Keyboard + Mouse Wireless Combo Set

SVEN®



Model: **KB-C3400W**

Manufacturer: SVEN PTE. LTD, 176 Joo Chiat Road,
Nº 02-02, Singapore, 427447.
Produced under the control of Oy Sven Scandinavia Ltd.
15, Kotolahdentie, Kotka, Finland, 48310. Made in China.

® Registered Trademark
of Oy SVEN
Scandinavia Ltd. Finland.



KB-C3400W