

# SVEN<sup>®</sup>

Wireless Stereo Headphones  
with Microphone

## USER'S MANUAL



# E-505B

[www.sven.fi](http://www.sven.fi)

***Congratulations on your purchase of the SVEN stereo headphones!***

**COPYRIGHT**

© SVEN PTE. LTD. Version 1.0 (V 1.0).

This Manual and information contained in it are copyrighted. All rights reserved.

**TRADEMARKS**

All trademarks are the property of their legal holders.

**BUYER RECOMMENDATIONS**

- Shipping and transportation equipment is permitted only in the original container.
- Does not require special conditions for realization.
- Dispose of in accordance with regulations for the disposal of household and computer equipment.

**APPLICATION**

SVEN E-505B wireless stereo headphones with microphone are designed for operation with PC, notebooks and other mobile devices by means of data transfer via Bluetooth protocol. They can be also used in internet telephony, during video conferences, in multimedia applications, in interactive games, for speech recognition and foreign language teaching.

**PACKAGE CONTENTS**

- Wireless stereo headphones set – 1 pc
- USB power cord to micro USB – 1 pc
- Charging case – 1 pc
- User's Manual – 1 pc
- Warranty card – 1 pc

**SAFETY PRECAUTIONS**

- Don't use the stereo headphones while driving.
- Don't use the stereo headphones at high volume for a long time (more than 15 minutes), as this may cause hearing impairment.

**SPECIAL FEATURES**

- Bluetooth wireless signal transmission
- Control of incoming calls and track switching
- Battery operation time up to 5 hours
- Operating time using a charging case up to 24 hours

***Technical support is on [www.sven.fi](http://www.sven.fi).***

**DESCRIPTION**

- ① Charging case LED indicator
- ② Headphones LED indicator
- ③ Multifunction button
- ④ Microphone
- ⑤ Micro USB jack for battery charging

**CONNECTION****First connection**

- Remove both headphones from the charging case, then put them back to the case to activate the headphones.
- The battery in the headphones and case is used as an integral part of the device. Before using for the first time, make sure that the headphones are fully charged. If the headphones are discharged, they need to be fully charged.

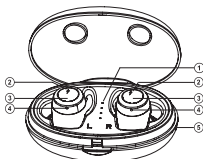


Fig. 1.

**Headset to a device interfacing**

- It is necessary first to interconnect the device with a signal source to transfer signals via Bluetooth. To pair the headphones with the device, put them to the charging case, then get them out. Both earphones are automatically switched on and connected to each other. At the same time on the right earphone LED indicator ② will alternate blue and red glow.
- It is necessary to select Bluetooth device search mode on a signal source (telephone, notebook, smartphone, etc.). «SVEN E-505B», message will be displayed on the screen, which is to be connected to\*.
- If connection successful, there will be a short beep signal in the headphones; the search mode indication on the headphones is over. If no devices connected, headphones will be turned off automatically in 2 minutes.
- If you cannot connect your device or connect a headset to each other, or the sound is played from only one earphone, you must re-enter the system to the search mode. Put the headphones to the charging case. Take headphones out the case and they will automatically connect to each other. After that, pair the headphones with the device, as described above\*.

**Bluetooth Technology**

- Wireless data transfer via the Bluetooth protocol enables to connect wireless headphones to compatible devices. Maximum radius of action of data transfer is 10 m. Such obstacles as walls or other electronic devices can interfere with the signal transfer.

\* You might have to enter "0000" code to connect some models of devices via Bluetooth.

**OPERATION****Case Charging**

• Connect the charging case (jack ⑤) to PC USB port or USB charger using micro USB to USB cable (included). During battery charging indicator ① lights blue alternately. Indicator ① lights blue when the battery is charged. When the battery charge level is low LED indicator ① lights blue alternately.

**Case Headset Charging**

• Put the headphones to the charging case. During battery charging indicator ③ lights red. When charged fully, indicator will glow blue, then turn off.  
• The battery in the headphones and case is used as an integral part of the device, therefore do not try to extract or replace it, because this can result in the warranty cancellation or the device damage.

**Device switching on**

• Remove the headphones from the charging case and they will automatically turn on. Make sure the headphones are charged.

**Device switching off**

• Put the headphones to the charging case. They will automatically turn off.

**Headphone control**

When connected to a telephone:

- In order to receive an incoming call press multifunction button ③. Press button ③ to finish the call.
- In order to reset the call, press and hold button ③ (~2 seconds).
- Play/Pause: while listening music press button ③ on the right or the left earphone.
- Press button ③ twice on the right or the left earphone to go to the next track. Press button ③ thrice on the right or the left earphone to go to the previous track.

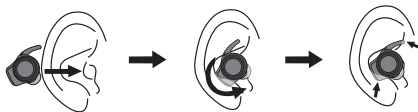


Fig. 2.

**TECHNICAL SPECIFICATIONS**

Parameter, measurement unit	Value
Sensitivity, dB	headphones: $102 \pm 3$ microphone: $-58 \pm 3$
Frequency range, Hz	headphones: 20 – 20,000 microphone: 30 – 16,000
Impedance, Ohm	16
Membrane, mm	Ø 6
Connection type	Bluetooth
Bluetooth supported profiles	HSP, HFP, A2DP, AVRCP
Radius of operation, m	up to 10
Operation time, h	up to 5
Operation time using a charging case, h	up to 24
Weight, g	45

**Notes.** *Technical specifications given in this table are supplemental information and cannot give occasion to claims. Technical specifications and package contents are subject to change without notice due to the improvement of SVEN production.*

Wireless Stereo Headphones  
with Microphone

**SVEN**®



**Model: E-505B**

Импортер в России: ООО «Регард», 105082, г. Москва, ул. Фридриха Энгельса, д.75, стр. 5. Уполномоченная организация в России: ООО «РТ-Ф», 105082, г. Москва, ул. Фридриха Энгельса, д. 56, стр. 1. Условия гарантийного обслуживания смотрите в гарантийном талоне или на сайте **www.sven.fi**. Гарантийный срок: 12 мес. Срок службы: 5 лет.

Производитель: «СВЕН ПТЕ. Лимитед», 176 Джу Чиат Роуд, № 02-02, Сингапур, 427447. Произведено под контролем «Свен Скандинавия Лимитед», 48310, Финляндия, Котка, Котолахдентие, 15. Сделано в Китае.

Manufacturer: SVEN PTE. LTD, 176 Joo Chiat Road, № 02-02, Singapore, 427447.

Produced under the control of Oy Sven Scandinavia Ltd, 15, Kotolahdentie, Kotka, Finland, 48310. Made in China.

® Registered Trademark of Oy SVEN Scandinavia Ltd. Finland.



**E-505B**