

SVEN®
YOU WANT – WE CAN

PC Wireless Gamepad

OPERATION MANUAL



**X-PAD
AERO**

www.sven.fi

Operation Manual

X-PAD AERO

Congratulations on the purchase of Sven product!

Please read this Operation Manual before using the unit and retain this Operation Manual in safe place for future reference.

COPYRIGHT

© 2014. SVEN PTE. LTD. Version 1.0 (V 1.0).

This manual and information contained in it are copyrighted. All rights reserved.

TRADEMARKS

All trademarks are the property of their legal holders.

NOTICE OF RESPONSIBILITY RESTRICTION

Despite the exerted efforts to make this Manual more exact, some discrepancies may occur. The information of this Manual is given on “as is” terms. The author and the publisher do not bear any liability to a person or an organization for loss or damages which have arisen from the information, contained in the given Manual.

UNPACKING

Unpack the device carefully. Make sure there are no accessories left in the box. Check up the device for damages; if the product was damaged during transportation, address the firm which carried out the delivery; if the product functions incorrectly, address the dealer at once.

CONTENTS

| | |
|---|----------|
| 1. DESCRIPTION | 2 |
| 2. SAFETY PRECAUTIONS | 2 |
| 3. PACKAGE CONTENTS | 2 |
| 4. SPECIAL FEATURES | 2 |
| 5. SYSTEM REQUIREMENTS | 2 |
| 6. DESCRIPTION OF THE CONSTRUCTION | 3 |
| 7. CONNECTION AND INSTALLATION | 4 |
| 8. TROUBLESHOOTING | 6 |

Technical support is on www.sven.fi

1. DESCRIPTION

X-Pad Aero Wireless Gamepad with built-in vibration mechanism and 2,4GHz Nano receiver included is an ergonomic game controller. Vibration feedback imparts a feeling of realistic experience during games. Rubber coating and ergonomic construction of X-Pad Aero enhance accuracy of its operation during games. Wireless Gamepad X-Pad Aero can be used in different games such as simulators, arcades, shooter games etc.

2. SAFETY PRECAUTIONS

- Do not disassemble or repair the device on your own. Maintenance and repairs should be carried out by qualified staff of the service centre only.
- Protect the device from direct impact of high humidity, dust, strong magnetic fields, vibrations, high temperatures, toxic liquids and gases.
- Instructions for device maintenance: for cleaning the case of the device please use clean soft cloth. Do not use such solvents as gasoline or spirit for cleaning, since these solvents can damage the surface of the device.
- Do not drop the device not to have it damaged.

3. PACKAGE CONTENTS

- Gamepad — 1 pc
- 2.4GHz Nano receiver — 1 pc
- AAA type battery — 3 pcs
- Software CD disk — 1 pc
- Operation manual — 1 pc
- Warranty card — 1 pc

4. SPECIAL FEATURES

- Ergonomic design of gamepad
- Supports DirectX 7.0 and up, Windows XP/Vista/7/8
- USB interface
- 2,4GHz Nano receiver with action range up to 7 m
- 4 axes, D-Pad, 2 joysticks and 12 buttons
- Vibration feedback function for higher realistic effect
- Turbo function for continuous firing
- Sleep function (standby mode) for longer battery life
- Rubber coating for more comfortable use
- 2 modes: Digital mode and Analog mode
- FC button for connection of Gamepad with Nano receiver
- 3 AAA type batteries included

5. SYSTEM REQUIREMENTS

- USB port available
- Operational System Windows XP/Vista/7/8
- DirectX 7.0 Version and up

Operation Manual

X-PAD AERO

6. DESCRIPTION OF THE CONSTRUCTION

- ① D-pad
- ② Left joystick (button 11)
- ③ TURBO: turbo mode ON button
- ④ MODE: mode switch button
- ⑤ FC: FC button
- ⑥ Buttons 1-6
- ⑦ Right joystick (button 12)
- ⑧ MODE indicator
- ⑨ Button 8
- ⑩ Button 10
- ⑪ Button 7
- ⑫ Button 9
- ⑬ POWER On/Off: power switch
- ⑭ Battery box
- ⑮ VIBRATION On/Off: vibration switch
- ⑯ Batteries
- ⑰ Battery box cover
- ⑱ USB cable
- ⑲ FC button of Nano receiver
- ⑳ Connection indicator

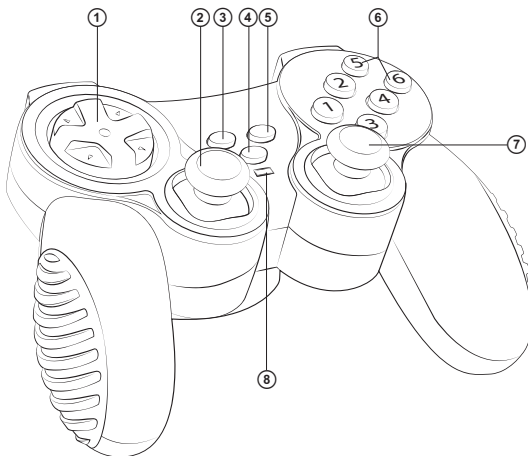


Fig. 1. Top view

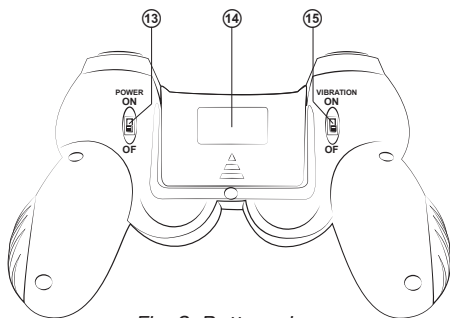


Fig. 3. Bottom view

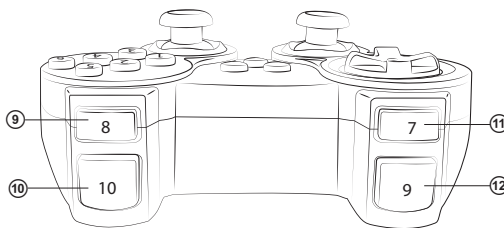


Fig. 2. Front view

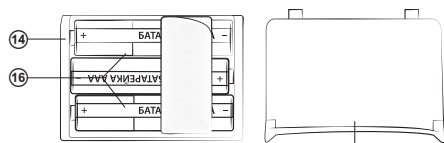


Fig. 4

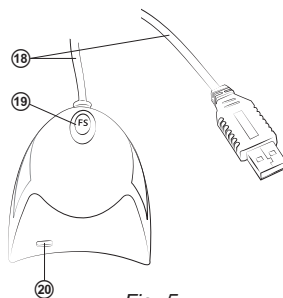


Fig. 5

Battery installation

- Open the cover of the battery box on the rear of the manipulator.
- Install AAA type batteries into the battery box following their polarity. (included).
- Close the cover of the battery box.

Note:

• Always install a set of the same new batteries. Incorrect installation of batteries may damage the game controller!

• If the manipulator does not work, check the battery or replace the discharged battery with a new one.

• Remove the battery from the manipulator, if you aren't going to use it for a long time (more than a week).

7. CONNECTION AND INSTALLATION

• After installation of batteries (Fig. 4), connect 2,4GHz Nano receiver via USB cable ⑱ to available USB port of your PC. After connection to your PC, device is automatically detected as a game controller and is fully ready for use. However, for Vibration Feedback function it is necessary to install drivers. Calibration of second joystick is also impossible without installation of drivers.

• Change POWER ON/OFF switch ⑬ into ON position. For connection of Gamepad and Nano receiver press FC button ⑲ of Nano receiver, the connection indicator ⑳ will light up, then press FC button ⑤ on the game controller. There is also another way for connection of Gamepad and Nano receiver: press FC button FC ⑲ of Nano receiver, then press at the same time combination of buttons «9+11» on the gamepad and hold these buttons for 15 seconds. Attention should be paid that Nano receiver and gamepad will be disconnected, if a gamer presses one of «9+11» buttons after connection has been made.

• Insert Software CD disk into your PC CD Rom and start setup.exe for installation of drivers. For testing and setting the game controller choose Start → Control Panel → Game Controller. There will open up Properties: PC TWIN SHOCK (Fig. 6) on your desktop.

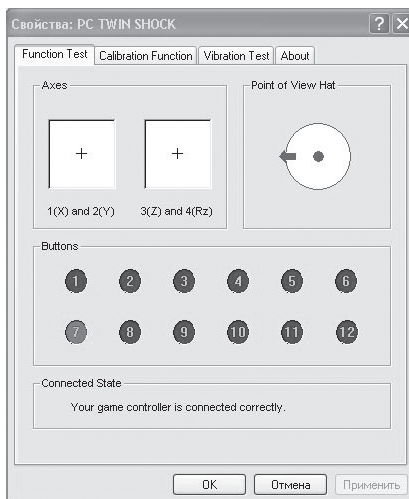


Fig. 6

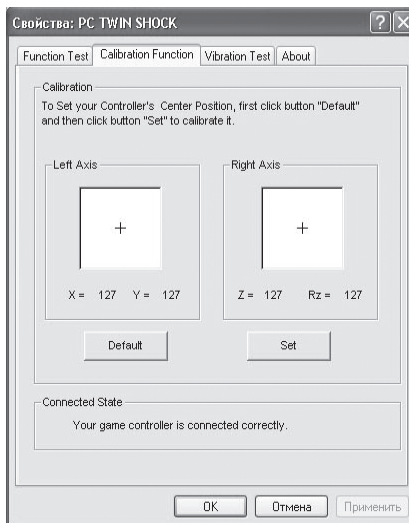


Fig. 7

- Click Function Test (Fig. 6) to test axes and buttons.
- Enter Calibration Function (Fig. 7) to calibrate all four axes.

- Enter Vibration test (Fig. 8) to test and to set Vibration feedback function:

- increase or reduce Vibration strength by moving cursor. For example: vibration strength is 85% in Fig. 8.
- test Vibration feedback function on the left or/and right motors by pressing Left force, Both force and Right force;
- after setting and testing press OK (confirm) in the bottom of the window.

Note. Vibration feedback function is switched ON/OFF by VIBRATION ON/OFF switch ⑬.

- **Switching Modes.**

The device works in Digital Mode and Analog Mode that are switched by MODE button ④, LED color ⑥ changes from red to green according to the selected Mode. Digital Mode (green LED) has 2 axes and 10 buttons available, while Analog Mode (red LED) has all four axes and 12 buttons available.

- **TURBO function.**

Turbo function imitates multiple pressing and holding of any button, while it was pressed only once. To activate this function, press any button 1-12, hold it and press TURBO button ③. Now this button will be programmed with Turbo function. To cancel this function, press button programmed with TURBO, hold it and press TURBO button again.

- **Sleep mode.**

In case the device has not been used for a period of time, it enters Sleep mode to prolong battery life. If Nano receiver has not been connected for more than 15 seconds or there have been no operations carried out with buttons or axes for more than 3 minutes, the device automatically gets into Sleep mode. To turn on Sleep mode, press one of these three buttons: 10, 11 or 12.

- **Low voltage alert function.** When battery is weak or empty, the green LED and the red LED will simultaneously flash indicating that present batteries should be replaced or rechargeable batteries should be recharged. To prolong battery life, the Vibration Feedback function turns off automatically.

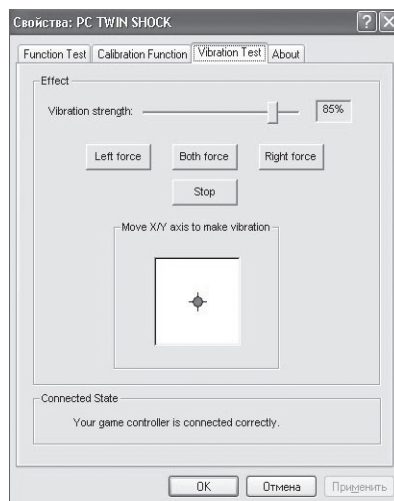


Fig. 8

8. TROUBLESHOOTING

| Problem | Solution |
|--|---|
| The joystick does not work normally after installation of drivers on the PC. | A. Check whether joystick is connected properly to your PC. B. Make sure that all the settings in Game Port Controller are installed and confirmed. C. Check whether the settings of the joystick are in conflict with the other peripherals. D. Restart your PC if the device still does not work normally. |
| Drivers can't be installed on the PC. | Install DirectX 7.0 or higher. |
| Some analog axis goes into effect automatically. | The gamepad hasn't been calibrated or the calibration hasn't been confirmed. |
| After connecting the joystick, its driving program can't be found. | Enter My computer → Properties → Hardware → Device manager and delete corresponding equipment with «!» mark and reconnect the gamepad to the PC. Then your PC will find the driving system. |
| After entering the game, vibration feedback function operates automatically. | Enter Force Feedback and calibrate it. |
| During the game vibration feedback is insufficient. | Enter Force Feedback and set the force of feedback. |

If none of the above mentioned solutions removes the problem, please consult a nearest authorized service center. Never try to repair the device on your own.

PC Wireless Gamepad



SVEN®
YOU WANT – WE CAN

Модель: **X-Pad Aero**

Импортер в России: ООО «СКАНДИТРЕЛ»,
111024, РФ, г. Москва, ул. Авиамоторная, д. 65, стр. 1.
Уполномоченная организация в России: ООО «РТ-Ф»,
105082, г. Москва, ул. Фридриха Энгельса, д. 75, стр. 5.
Условия гарантийного обслуживания смотрите
в гарантийном талоне или на сайте **www.sven.fi**
Гарантийный срок: 12 мес. Срок службы: 2 года.
Производитель: «СВЕН ПТЕ. Лимитед»,
176 Джу Чиаг Роуд, № 02-02, Сингапур, 427447.
Произведено под контролем «Свен Скандинавия
Лимитед», 48310, Финляндия, Котка,
Котолахдентие, 15. Сделано в Китае.

Manufacturer: SVEN PTE. LTD, 176 Joo Chiat Road,
№ 02-02, Singapore, 427447. Produced under the
control of Oy Sven Scandinavia Ltd. 15, Kotolahdentie,
Kotka, Finland, 48310. Made in China.

© **Registered Trademark of Oy SVEN
Scandinavia Ltd. Finland.**

**X-PAD
AERO**